

Aurora Boveridge College



“ What impressed me the most is how the different departments are working together to help our child, it’s great. This may be the norm for you, I assure you it’s a first for us. ”

A specialist further education college providing day and residential support for young people with Autism spectrum conditions or additional mild to moderate social, emotional and mental health needs.

At The **Aurora** Group

We believe in giving people the opportunities they need to create and lead fulfilling, independent lives.

Established in 2015, we are now the UK's sixth largest provider of education, care and support services for children and young people with special educational needs and disabilities. Each of our schools, colleges and residential homes retains its own unique identity while embracing and embodying our group's core values:

- We are caring. We understand that your experience in mainstream care and education may have been a difficult one. We take seriously our responsibility for the children and young people in our care, and are committed to making your time with us as positive and fulfilling as possible.
- We are ambitious. We have high expectations of all our children and young people, regardless of what barriers they may have faced in the past. We encourage them to expect more for themselves, while challenging employers and communities to understand and value their diverse needs and attributes.
- We are collaborative. Everything we do, we do in partnership with you. We actively seek and listen to feedback from students, parents and staff, to find out what's working well, what we can do better, and how we can further develop all our services to benefit the people we work with.
- We are trusted. Our business is funded by ethical investors. They understand that sustainable growth is possible only when we hold ourselves to the highest standards, by delivering consistently top-quality services to every single person we work with.
- We are innovative. We begin planning for each young person's future the minute they walk through our doors. We tailor our approach to their unique needs, and are constantly looking for new opportunities to help them explore, enhance and employ their own skills, talents and abilities.

Caring

Ambitious

Collaborative

Trusted

Innovative

Welcome

I am pleased to introduce Aurora Boveridge College and share our unique way of working, which enables young people to achieve their goals and live fulfilling lives of their own choosing.

Our multi-disciplinary approach places students at the centre of everything we do. Our highly skilled and specialist teaching, support and therapeutic teams work with each young person to ensure their needs are fully met and that every achievement takes them closer to reaching their individual goals.

We prepare our students for adult life, through person-centred academic and vocational study programmes leading to independent living with employment or further study. By working together, we increase resilience, confidence, self-esteem, emotional intelligence and well-being: the cornerstones on which strong and successful long-term futures are built.

We welcome visitors throughout the year and look forward to hearing from you.

Lloyd Richards

Principal of Aurora Boveridge College



About Our College

At Aurora Boveridge College, we support young people between the ages of 16 and 25 who have additional social, emotional and mental health needs, by preparing them for adult life and facilitating their transition into further education, training or employment.

We offer both day services and residential placements, with varying levels of academic and therapeutic support to enable participation in study programmes and college activities.

Our facilities

Aurora Boveridge College sits in 16 acres of listed gardens within a wider 50-acre campus, located near the village of Cranborne in the Dorset countryside.

Within the college buildings, students enjoy access to well-equipped classrooms, spacious communal rooms and an outreach and pastoral hub, as well as vocational areas including a digital studio, science lab and art and design base. Our extensive grounds include horticulture learning areas with large glasshouses, as well as motor vehicle workshops, an animal care unit, well-equipped training kitchen, bushcraft learning zone and excellent sports facilities.

We also make use of local amenities including a cinema, theatre and leisure centre with a swimming pool, all located within a short drive from the college. Bournemouth and Poole are only 40 minutes away by car, with many leisure facilities on offer from the beach to shopping centres, restaurants and the beautiful historic Jurassic Coast. The market towns of Wimborne and Ringwood are approximately 14 miles away.



Our curriculum

We support each of our students to set and meet realistic goals for their own future, whether that is by working towards specific qualifications or vocational experience, or focusing on developing key life skills.

We offer a range of post-16 study programmes, including GCSE and A Level qualifications in selected subjects, as well as vocational qualifications in horticulture, motor vehicle mechanics, hospitality and tourism, IT and animal care.



Each study programme encompasses work experience, work-related learning, employability skills and independent living skills development, while our tutorial programme covers topics such as health and wellbeing, sex and relationships, cultural diversity and personal safety. We also work with a range of local, national and global businesses and agencies to offer excellent work-related learning experiences and provide meaningful employability opportunities for our students.

Therapeutic support

Our multi-disciplinary team delivers specialist on-site therapy including Occupational, Speech and Language, Psychology and Psychiatry. Therapists work both directly with our students and indirectly through teaching and support staff to meet individual needs.

Group and one-to-one sessions are offered where appropriate. Many of our students will be reluctant to accept therapeutic support initially and so our therapists develop trust by being seen around the college and joining in with activities. We also teach self-coping strategies to help learners manage their own anxieties and behaviour as young adults.

Residential support

For residential students, Aurora Boveridge College offers an opportunity to develop independent living skills in a safe, supported environment.

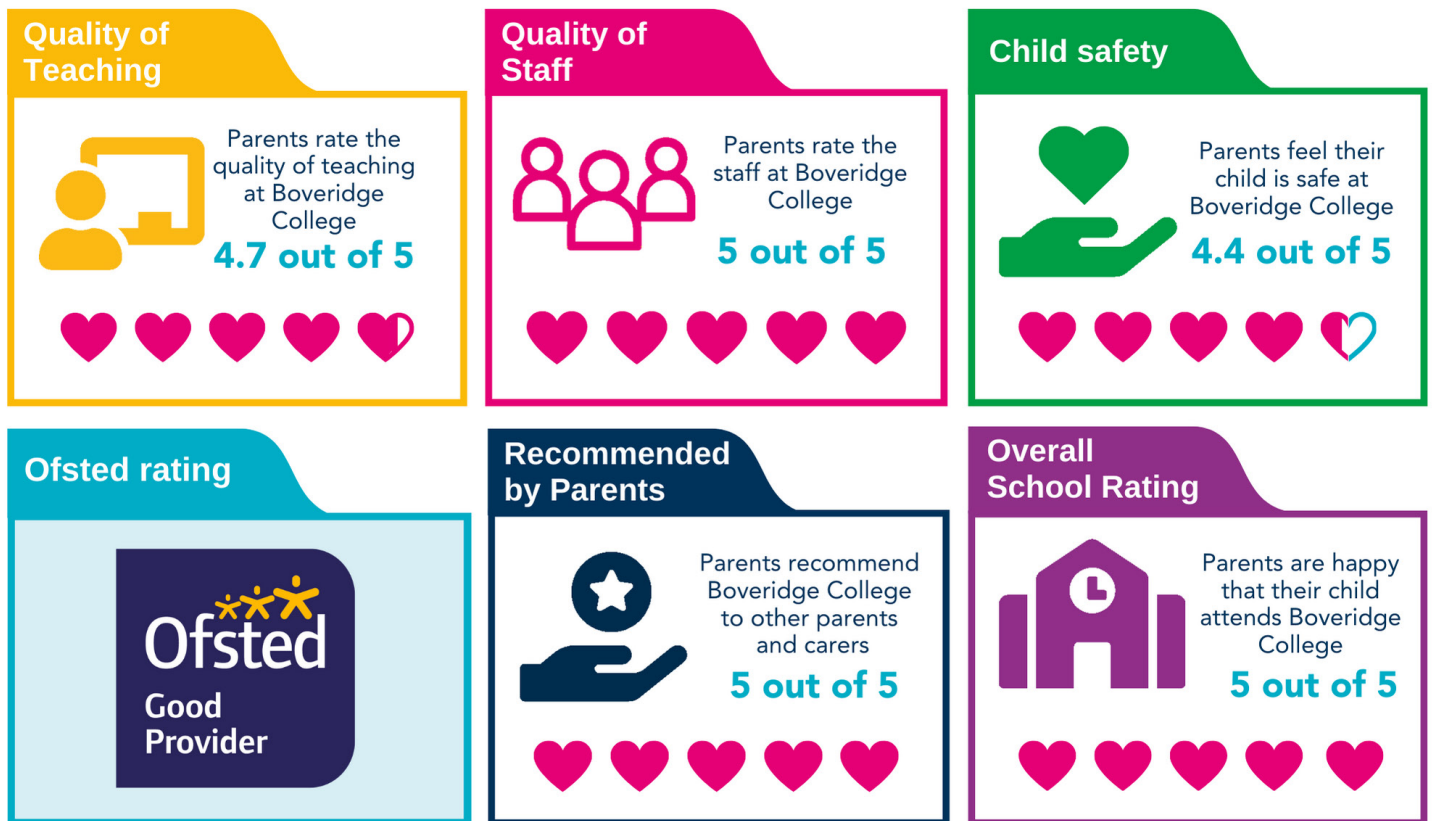
Students are supported to gradually develop their skills and confidence in independence, both onsite and offsite. At each progression step, a carefully planned decrease in staff support encourages students to demonstrate and develop their ability to live more independently.

We recognise that being away from home, especially for the first time, can be stressful – so our residential accommodation is both homely and welcoming. Each accommodation area comprises 8 or 10 individual bedrooms, some of which are en-suite, with communal areas for socialising. Shared laundry and cooking facilities are available. Residents are encouraged to personalise their individual rooms with items from home to help them settle in.

Students are supported to develop vital independent living skills including financial planning and budgeting, meal planning and preparation, cleaning and laundry, and independent travel. Weekly resident meetings are held in each accommodation base, to plan group and individual leisure activities (both on and off-campus).

Our Outcomes

Parental feedback



Your experience with us

We understand that for some students arriving at Aurora Boveridge College, particularly those who have had negative experiences of mainstream education, even accessing the college site can be a challenge at first.

We offer a bespoke outreach service to re-engage these students, removing their barriers to learning and participation while building their confidence and trust in the college community.

When a student is ready to leave Aurora Boveridge College, we ensure their transition is as smooth as possible. We support them to build sustainable and independent lives for themselves, by helping them to find accommodation, employment and/or further study opportunities and reconnecting them with their community at home or in the place they wish to live.

Once our students progress from Aurora Boveridge College, we check in over time to ensure they are coping well and to support them with problem-solving if required.

What you need to know

Uniform

There is no uniform requirement at Aurora Boveridge College, however students are expected to dress appropriately for the time of year and for any activities being undertaken.

Term dates

Autumn Term: 05/09/22 - 16/12/22
Spring Term: 03/01/23 - 31/03/23
Summer Term: 17/04/23 - 18/07/23

Our commitment to you

Quality statement

At Aurora Boveridge College we strive to provide the highest quality service to young people, parents/carers and local authorities. We believe that all these groups have the right to comment on the service we provide and to understand the complaints procedure.

If you do have a concern or complaint, we do want to hear about it as soon as possible. Please ask the School office for a copy of our complaints procedure if you would like to know more. We like to know when we are getting things right too, so please feel free to also send us any compliments – our staff are always happy to hear them!

Safeguarding statement

At Aurora Boveridge College we are wholly committed to safeguarding and promoting the wellbeing of our students, and we expect all staff and visitors to share this commitment.

Safer recruitment practices are followed and all staff have an Enhanced DBS check.



Contact Us

For more information please contact us at:

Aurora Boveridge College

Cranborne

Wimborne

BH21 5RT

020 3617 0170

boveridgecollege@the-aurora-group.com

referrals@the-aurora-group.com

www.theauroragroup.co.uk/boveridgecollege



ADHD, ASC, MLD,
SEMH



16-25



Mixed



38 Week Day
52 Week Residential

Caring

Ambitious

Collaborative

Trusted

Innovative



www.theauroragroup.co.uk



020 3617 0170



info@the-aurora-group.com



AuroraGroupUK



The_AuroraGroup



The Aurora-Group



the_auroragroup