

Aurora Summerfields School



“ The positive, encouraging tone has been created, as well as acceptance and kindness and all the staff embody this. It is a truly incredible environment for any child lucky enough to be educated in. ”

A safe place to learn and grow where uniqueness is nurtured and aspirational futures are created.

At The **Aurora** Group

We believe in giving people the opportunities they need to create and lead fulfilling, independent lives.

Established in 2015, we are now the UK's sixth largest provider of education, care and support services for children and young people with special educational needs and disabilities. Each of our schools, colleges and residential homes retains its own unique identity while embracing and embodying our group's core values:

- We are caring. We understand that your experience in mainstream care and education may have been a difficult one. We take seriously our responsibility for the children and young people in our care, and are committed to making your time with us as positive and fulfilling as possible.
- We are ambitious. We have high expectations of all our children and young people, regardless of what barriers they may have faced in the past. We encourage them to expect more for themselves, while challenging employers and communities to understand and value their diverse needs and attributes.
- We are collaborative. Everything we do, we do in partnership with you. We actively seek and listen to feedback from students, parents and staff, to find out what's working well, what we can do better, and how we can further develop all our services to benefit the people we work with.
- We are trusted. Our business is funded by ethical investors. They understand that sustainable growth is possible only when we hold ourselves to the highest standards, by delivering consistently top-quality services to every single person we work with.
- We are innovative. We begin planning for each young person's future the minute they walk through our doors. We tailor our approach to their unique needs, and are constantly looking for new opportunities to help them explore, enhance and employ their own skills, talents and abilities.

Caring

Ambitious

Collaborative

Trusted

Innovative

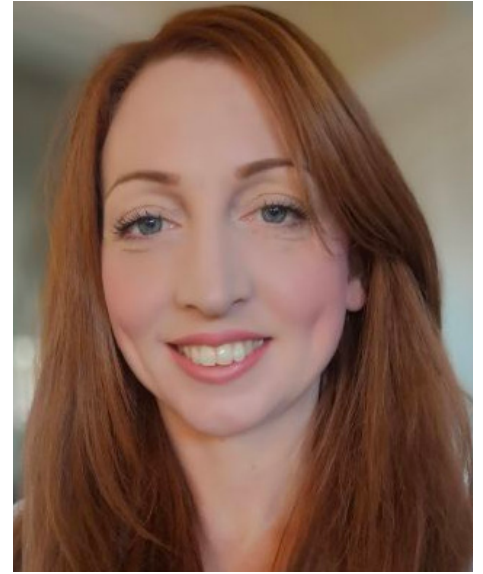
Welcome

At Aurora Summerfields School we aim to create an imaginative, flexible and aspirational curriculum which enables our students to succeed and mature into happy, healthy, resilient learners. We understand that many of our students may have experienced challenges in their journey through education, and our staff are not only highly skilled, but also empathetic to individual needs.

I am proud to be part of a school that values diversity, recognises unique skills, interests and support strategies and enables each pupil to achieve their full potential.

Kirsty Jockel

Head of School, Aurora Summerfields School



At Aurora Summerfields School we work closely with our sister school, Ofsted-rated 'Outstanding' Aurora Hanley, and we are linked together closely through experience, ethos, staffing and vision.

We understand how much our young people need to feel accepted, understood, listened to and supported to achieve life-long learning. To be prepared, not just academically, but socially and emotionally for the challenges that life brings.

Tracy Whitehurst

Principal, Aurora Summerfields and Hanley Schools



About Our School

Aurora Summerfields is a safe place to learn and grow, where uniqueness is nurtured, and aspirational futures are created. Our new school welcomes students who require additional support to explore and develop their own unique talents, skills and abilities. Many of our students will have sensory and emotional issues that affect their ability to cope in mainstream settings. With specialist teaching, integrated therapeutic support, small classes and a nurturing approach, we help them to re-engage with learning and enjoy school life.

Our facilities

Aurora Summerfields School is located near Wilmslow, Cheshire East.

All our rooms are bright, modern and sensitively designed for children and young people who learn best in a calm, safe environment.

Facilities include:

- High staffing ratios with small class sizes
- A specialist classroom for Art and Design and Design Technology
- A teaching kitchen with individual workstations for the delivery of Food Technology
- Quiet spaces attached to classrooms for when students would like an area to self-regulate
- Direct access from classrooms to outdoor spaces
- Pupil horticulture area
- Safe outside playground spaces
- A high-spec school kitchen for healthy, on-site meals
- Regular community access with school minibuses
- Clinical, SaLT and OT integrated working





Our curriculum

We offer a broad, balanced curriculum with a flexible timetable designed around our students, recognising their individual abilities, interests and needs.

Learning programmes for each Key Stage are based on the National Curriculum, with opportunities to develop functional and independent 'skills for life'. Real-life, hands-on learning and regular community access ensure that our young people are supported to develop independence and resilience. Students work towards nationally recognised qualifications and certificates.

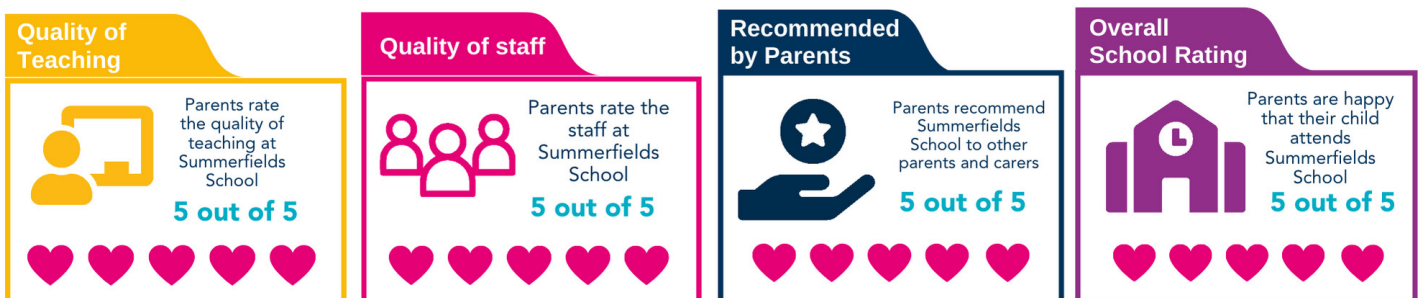
Supporting learning

ECHP strategies and outcomes are embedded into our curriculum and reviewed regularly with parents. Student Support Plans enable staff to develop an effective understanding of sensory, anxiety or other needs that may impact the young person and present a challenge to learning. We can then strive to sensitively and effectively provide resources, skills and activities to overcome these barriers.

These plans are kept 'live' and shared with students in order to gain their voice and teach them the skills to regulate themselves.

Every student has targets not only in the areas of the National Curriculum, but also in areas of communication, daily living skills and socialisation. Regular 'Mindworks' sessions support students to overcome anxiety, understand diagnosis and learn essential communication and social skills.

Parental feedback



Your experience with us

Every transition into Summerfields School is different. We work with each young person to support an integration that is as fast or as slow as needed to build relationships and reduce anxiety.

When a young person arrives at Aurora Summerfields School, we commit to exploring ways of helping them fulfil their potential in every area of their life. We begin by creating an environment where they feel safe and able to learn. We take a positive approach to behaviour management, encouraging the development of a strong sense of identity while promoting effective interaction with others.

All our classes are small and are managed by a teacher and a minimum of one teaching assistant.

Individual pastoral support and care for each student is provided by their form teacher, who also has regular contact with their parents and carers to offer support and guidance.

Throughout their time with us, students have an opportunity to achieve a range of qualifications, depending on their needs and interests. Our Key Stage 4 Curriculum is developed to ensure that, along with important maths and English Entry Level or Functional Skills Qualifications, students receive those that best prepare them for their next step, making the most of their unique abilities.

By the time they leave us, each of our students will be in a position to make meaningful, informed choices about their own future, whether that is by accessing further education, or through appropriate vocational training or employment.

Our aim is to provide a therapeutic provision includes speech and language therapy and occupational therapy, with our clinical staff working in conjunction with teaching and support staff to provide holistic support for every student.



What you need to know

Uniform

At Aurora Summerfields School we do not have a school uniform. We know that many of our students struggle with the feel and texture of clothes, so we prefer them to wear whatever makes them feel comfortable in school.

School meals

All meals are freshly prepared and cooked on site, with all produce sourced locally. Special dietary requirements can be catered for and we will always do our best to support and encourage our students to taste new textures and flavours. If any student does not feel able to eat the menu on site they are more than welcome to bring a packed lunch.

Term dates

Our term dates are published annually and are available on our school website at:

<https://www.the-aurora-group.com/summerfields>

Transport

All transport is via Local Authority-funded taxis and is not organised by the school.

Our commitment to you

Quality statement

At Aurora Summerfields School we strive to provide the highest quality service to young people, parents/carers and local authorities. We believe that all these groups have the right to comment on the service we provide and to understand the complaints procedure.

If you do have a concern or complaint, we do want to hear about it as soon as possible. Please ask the School office for a copy of our complaints procedure if you would like to know more. We like to know when we are getting things right too, so please feel free to also send us any compliments – our staff are always happy to hear them!

Safeguarding statement

At Aurora Summerfields School we are wholly committed to safeguarding and promoting the wellbeing of our students, and we expect all staff and visitors to share this commitment. Safer recruitment practices are followed, and all staff have an Enhanced DBS check.

We focus our Safeguarding training to address the concerns and issue we see in school. Within the curriculum we also address and provide guidance and support to students on a range of safeguarding issues particularly within the online world.

Contact Us

For more information please contact us at:

Head of School: Kirsty Jockel

Aurora Summerfields School

Village Way,
Wilmslow,
SK9 2GH

01625 786290

summerfieldsschool@the-aurora-group.com

referrals@the-aurora-group.com

www.theauroragroup.co.uk



Communication and Interaction, SLCD, ASC and associated difficulties, SPD, ADHD and MLD



5-19



Mixed



38 Week Day

Caring

Ambitious

Collaborative

Trusted

Innovative



www.theauroragroup.co.uk



020 3617 0170



info@the-aurora-group.com



AuroraGroupUK



The_AuroraGroup



The Aurora-Group



the_auroragroup